

 3  1  2



Oriental Road, *Sunninghill*

OSBORNE HEATH

A three bedroom, two bathroom character property with a garage close to Sunninghill high street.

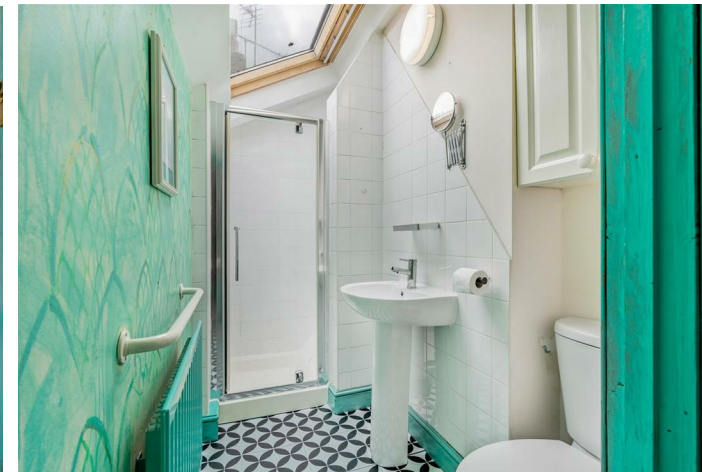
On the ground floor is a living and dining room with open fire place, modern kitchen, utility room and a downstairs bathroom.

The first floor has the principal bedroom with an en suite, and two further double bedrooms.

Outside the property has a front garden, rear garden and garage which can be accessed from a private lane.

Oriental Road is a small cul-de-sac in the village of Sunninghill, in-between Ascot and Sunningdale where the train stations run services to London, Reading and Guildford. Nearby schools include Charters, St Francis, St Michaels and The Marist. The village has a number of local high street businesses and great restaurants and pubs. Nearby places of interest include Ascot Racecourse, Coworth Park, Guards Polo Club, Legoland, The Lexicon, Wentworth Club and Windsor Great Park. Sunninghill is also convenient for the M3, M4, M25 and Heathrow Airport.

EPC rating E. Council Tax band D.

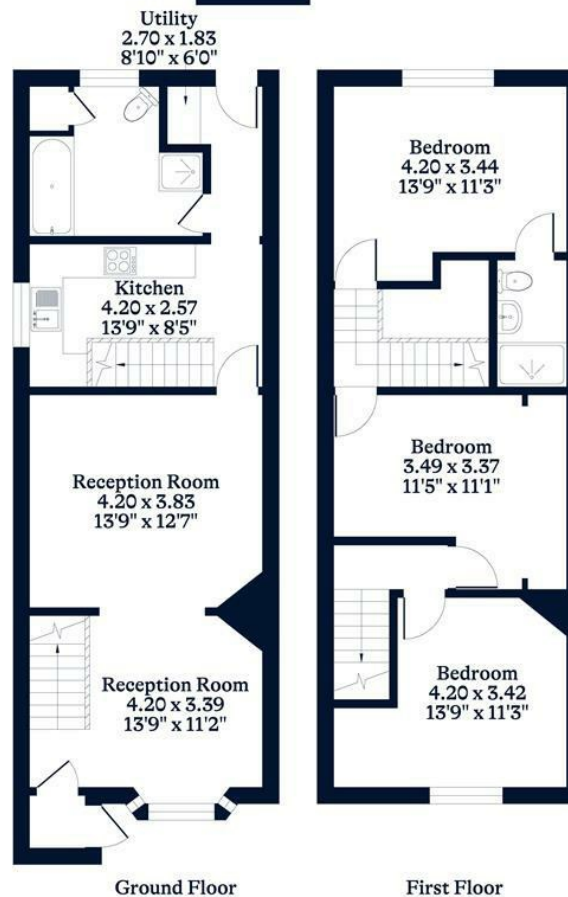




APPROXIMATE FLOOR AREA
House - 103.30 sq m - 1112 sq ft
(Gross Internal Area)



NOT TO SCALE
This plan is for illustration purposes only



This plan is for layout guidance only. Not drawn to scale unless stated. Windows and door openings are approximate. Whilst every care is taken in the preparation of this plan, please check all dimensions, shapes and compass bearings before making any decisions reliant upon them.

OSBORNEHEATH.CO.UK